

Data-Driven Decision Support Tools to for Greenspace Planning

How OKI supports metropolitan
communities with environmental data

NAEP May 2026



About OKI

- Regional convener across jurisdictions
- Transportation, environment, and economic planning
- Focus on issues **crossing political boundaries**

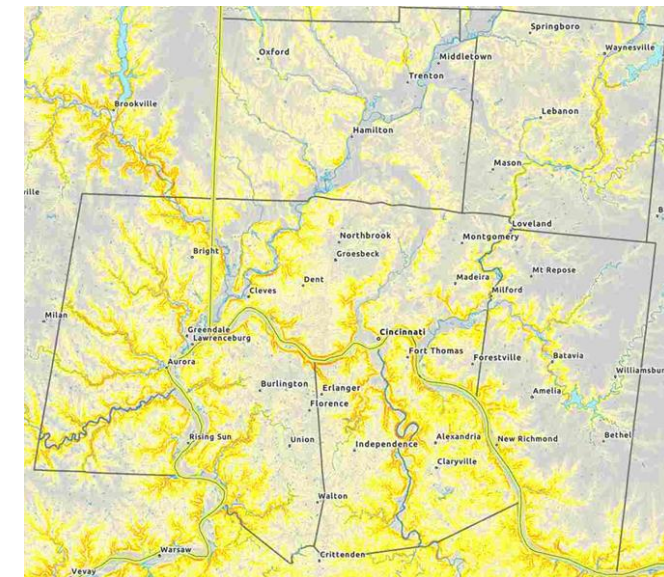
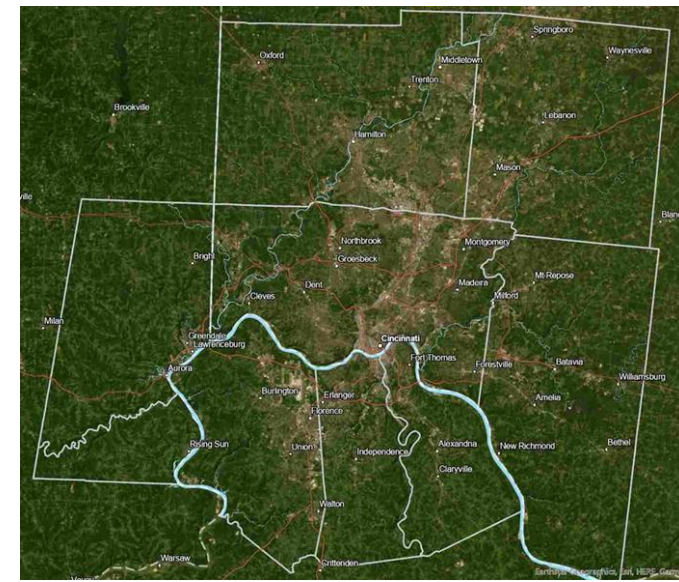


Urban, Suburban, Ag

About the Area



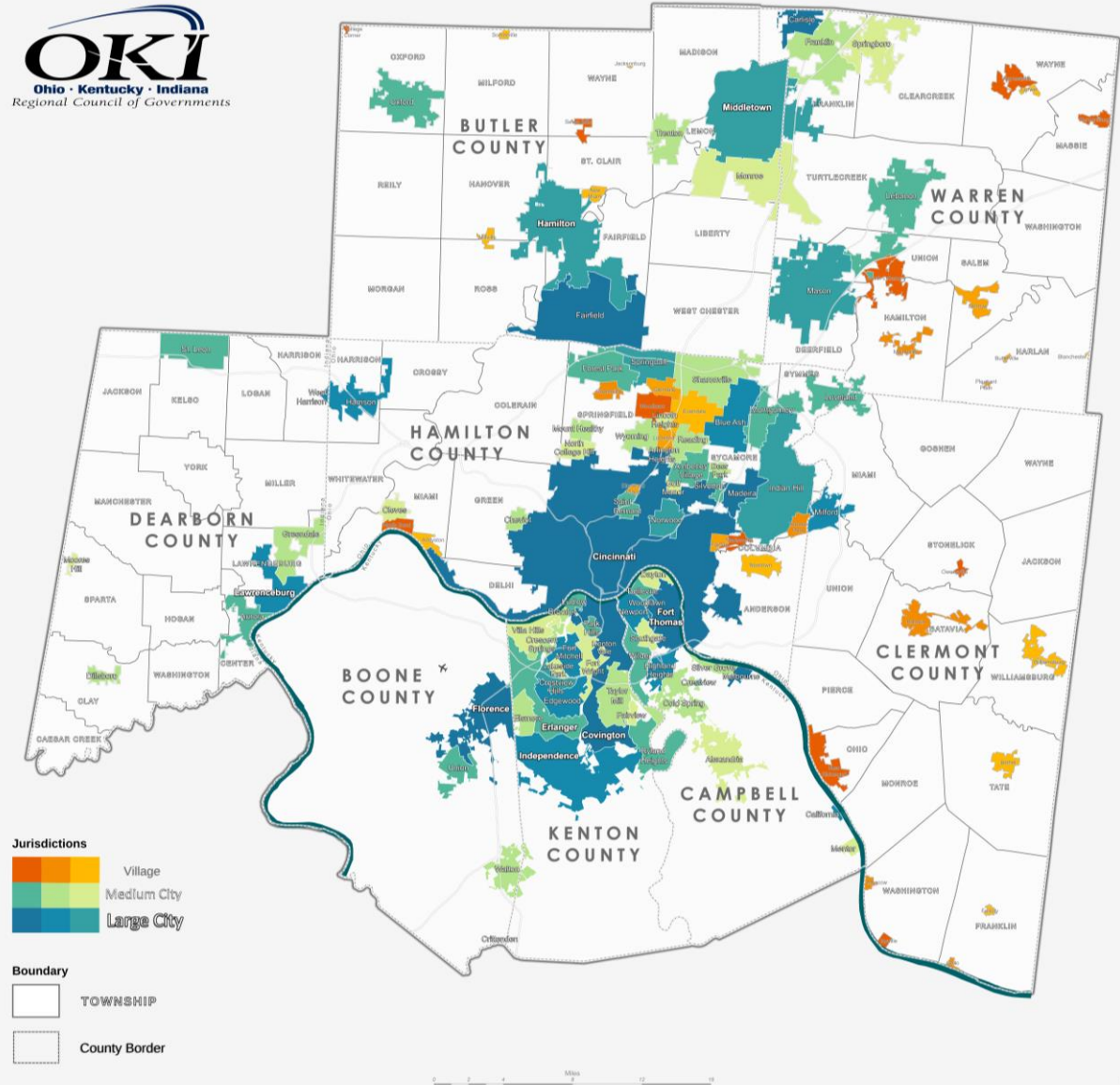
Ohio River Basin



Steep slopes

OKI Overview

- Federally mandated since 1964
- Serves 196 jurisdictions
- 8 Counties in 3 States
- Approve half a billion dollars in projects every year
- Invest \$50 million in projects every year
- 118-member board, approximately 2/3 elected officials
- Operate by consensus



Who We Are

A **Metropolitan Planning Organization (MPO)** is a federally mandated and federally funded transportation policy-making organization. It comprises representatives from local government and governmental transportation agencies.

OKI is also a **regional council of governments** — a group of business and community organizations committed to developing collaborative strategies to improve the quality of life and the economic vitality of our region.

Our Leadership

OKI Board of Directors and Executive Committee

OKI's Board is made up of more than one hundred elected and appointed officials from all eight counties in the region.



OKI's Activities

Metropolitan Planning Organization (MPO)

- Long Range Transportation Plan
- Short Range Program (TIP)
- Special Multimodal Studies
- Technical Assistance
- Data Development, Dissemination
- Travel Modeling/Forecasting

Council of Governments (COG)

- Strategic Regional Policy Plan
- Regional Planning
- Water Quality Planning
- Greenspace Planning

Planning Services for Decision-Makers



Transportation Planning

Modeling
Studies & Plans



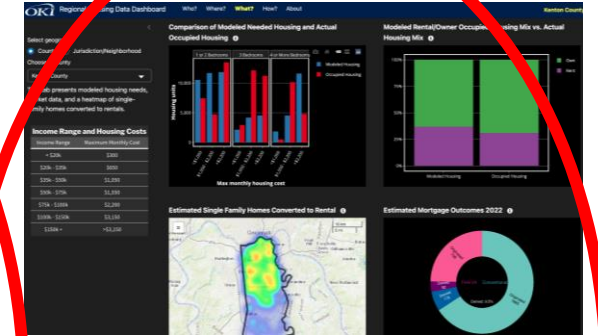
Regional Planning

Fiscal Impact Analysis Model
Comprehensive Planning
Water Quality



Greenspace

Advanced Mitigation
Environmental Consultations



Data

Data sets
GIS
Dashboards

Environmental Resources Viewer- Demonstration

The screenshot displays the Environmental Resources Viewer web application. At the top left is the OKI Regional Council of Governments logo. The navigation bar includes 'Home' and 'Planning' (highlighted in yellow). Below the navigation bar are dropdown menus for 'County: -All-', 'Jurisdiction: -All-', and 'Neighborhood: -All-'. To the right is a 'Filters' section with a 'Watershed Name: -All-' dropdown. On the far right, there are links for 'Glossary', 'RIBITS', and 'Permit Finder'. The main map area shows an aerial view of a residential neighborhood with a yellow circle highlighting a specific location. To the left of the map is a 'Location' search bar with a scale of 1 mile. On the right side, a 'Layers' panel is open, listing various data layers such as 'Boundaries', 'Long Range Plan 2050', 'Historic Places', 'Agricultural Districts', 'Water and Wetlands', 'Parks & Preserves', 'Prime Farmland', 'Riparian Areas Percent Natural', 'Centralized Sewer', 'Natural Heritage Database', 'Recognized Biodiversity', 'Landslide Susceptibility', and 'Hydric Soils'. Below the layers panel, there is a message: 'There is currently no added data.' with a '+ Click to add data' button. At the bottom left, the OKI logo is displayed again.

Greenspace Environmental and Mitigation Mapper (GEMM)- Demonstration

There is currently no added data.

Suitability Modeler

1 Select layers 2 Design model 3 Generate chart

- HUD Environmental Health Hazards
- MLI Intact Habitat Cores
- MLI Midwest Conservation Blueprint 2023
- MLI Riparian_Areas
- MLI Streams
- NPS NRHP Resources
- NWI Wetland
- OKI Greater than 50%tile Low Income
- OKI Greater than 50%tile Over 65
- OKI Greater than 50%tile Under 18
- OKI Karst Sinkhole Compilation
- OKI Land Surface Temperature
- OKI Natural Heritage Data
- OKI Parcels with Streams
- OKI Proximity to Mitigation Projects
- OKI Proximity to Parks and Protected Areas
- OKI Schools within Half Mile
- OKI Streams with Habitat Value
- OKI Watershed with Action Plan
- TNC Climate Connectivity
- TNC Resilient Land
- TNC_Recognized_Biodiversity

The GEMM works by using a Weighted Raster Overlay or WRO. The WRO combines several raster layers based on user-defined weights of layers and classes within each layer. Use the tool below.
[More information on WRO can be found here.](#)



Boundaries

- OKI Neighborhoods
- Jurisdictions
- HUC12
- Counties

Powered by Esri

How Communities use These Tools

2026 Solicitation for Projects
STBG/SNK/TA
Federal Funds for FY2030

March 10, 2026



Grant Applications
and Scoring Projects



Boone County Conservation District
6028 Camp Ernst Road, Burlington, KY 41005
Phone: 859-586-7903 ext. 3 Email: info@bccdky.org
www.bccdky.org

Boone County Conservation District Report

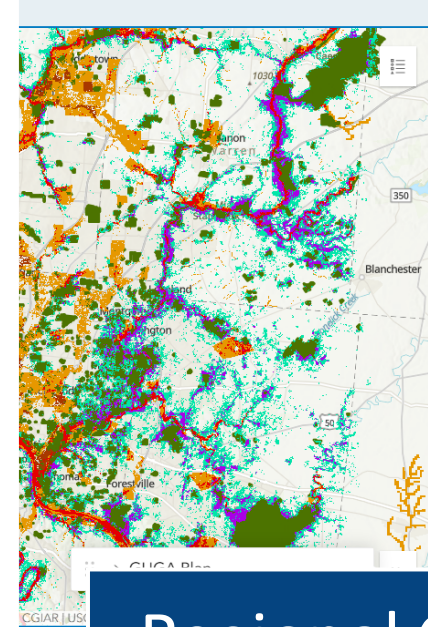
Inventory of environmentally sensitive areas and natural resources in Boone County, KY

Introduction and Purpose

Boone County Planning Commission is in the process of completing a comprehensive plan entitled "Our Boone County: Plan 2045" (Plan). This Plan lays out the countywide objectives which aims to balance development and preservation needs for the cities of Florence, Union, and Walton, as well as unincorporated Boone County. The Plan is in development and intends to articulate Land Use and other recommendations built from public engagement efforts.

The Boone County Conservation District (BCCDKY) is using the comment period to address the Plan's goals and objectives for the Environmental and Natural Resource section. Upon initial comments and discussions with Planning Commission personnel, the BCCDKY and Planning Commission agreed that a high-level study was needed to help identify Boone County's most environmentally sensitive areas and natural resources. Amid planned development and growth for the county, it is important to identify our most pristine and unique natural communities. These areas promote the health and wellbeing of our citizens (growing population) by providing clean air, improving water quality, creating opportunities for recreation, and protecting the land for many unique

Comprehensive
Planning for Counties



The Greenspace Alliance Regional Greenspace Plan to guide collabor

The Regional Greenspace Plan focuses on spaces that are high value and should be protected, and provide significant health and environmental benefits because they serve populations disproportionately affected by environmental injustice. The plan is developed collaboratively by Alliance partners and uses data related to human and environmental health.

[VIEW THE FULL MAP](#)

Regional Greenprint
Planning



Why this Matters Now OKI's Strategic Regional Policy Plan?



Tools for Implementation



Data That Drives Action



Resilient Communities

OKI helps communities plan, prioritize, and implement nature-based and climate-ready solutions—across boundaries



Contact Information
Margaret Minzner
mminzner@oki.org