

Sustainable Brownfields Redevelopment Revitalizing the Underserved Southside Chicago Community

2026 NAEP National Conference
May 14, 2026

Presenter Information



Linda Yang, P.G.

VP, Director of Growth
Environmental Services

Terracon Consultants, Inc.

630-445-0159

Linda.yang@terracon.com

ABOUT TERRACON

Our Services:

- Facilities
- Environmental
- Geotechnical
- Materials



8,000+
PROFESSIONALS



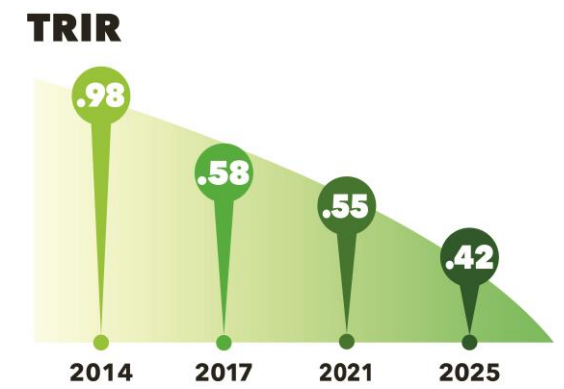
88,000+
PROJECTS IN 2025

ENR RANKINGS 2025

#19 TOP 500
DESIGN FIRMS

PROJECTS
IN ALL
50
STATES

100%
EMPLOYEE-OWNED



Explore with us



Terracon Environmental

- Building Environmental Sciences
- Environmental Engineering and Construction
- Environmental Planning, Siting and Permitting
- Environmental, Health, and Safety
- Sustainability and Resiliency Services
- Site Development, Closure, and Restoration
- Solid Waste Planning and Design



Project Site

Green Era sits on a former brownfield in Auburn Gresham that was remediated with support from USEPA, IEPA and Department of Economic Opportunity

The Sustainable Redevelopment Project

- GreenEra Educational NFP
- Terracon Consultants, Inc.
- City of Chicago
- Illinois Environmental Protection Agency
- U.S. Environmental Protection Agency
- USEPA Brownfields Cleanup Grant
- IL EPA Brownfields Revolving Loan Fund

What we're doing today:

Diverting 85,000 tons of food waste annually

Generating 130,000 MMBtus of renewable natural gas

Recovering 5,000 tons of nutrient-rich soil supporting hundreds of urban farmers

...and we're adding a second set of tanks that will **double** our capacity



GREEN
ERA
CAMPUS

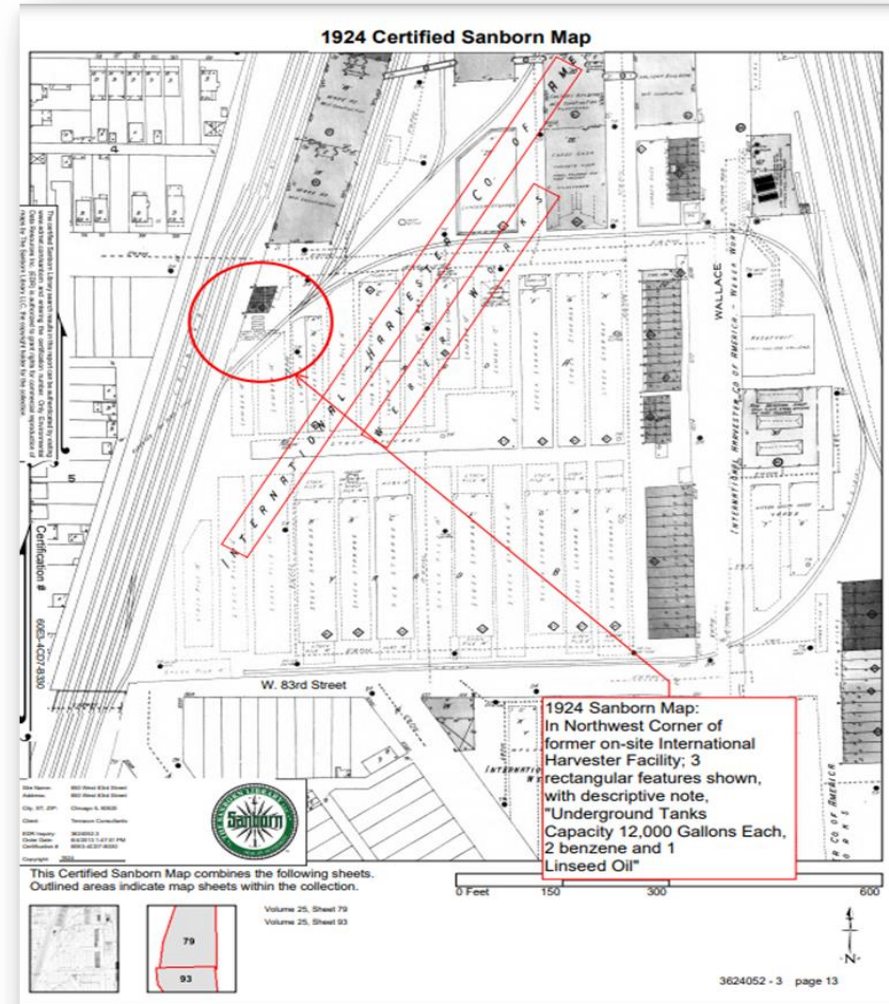


Our Model: Complex Problems Require a Comprehensive Solution

The *only* community-based energy project of its kind, the Green Era Campus will uplift the South Side of Chicago as a blueprint for the nation in developing a green economy and a sustainable future for all.

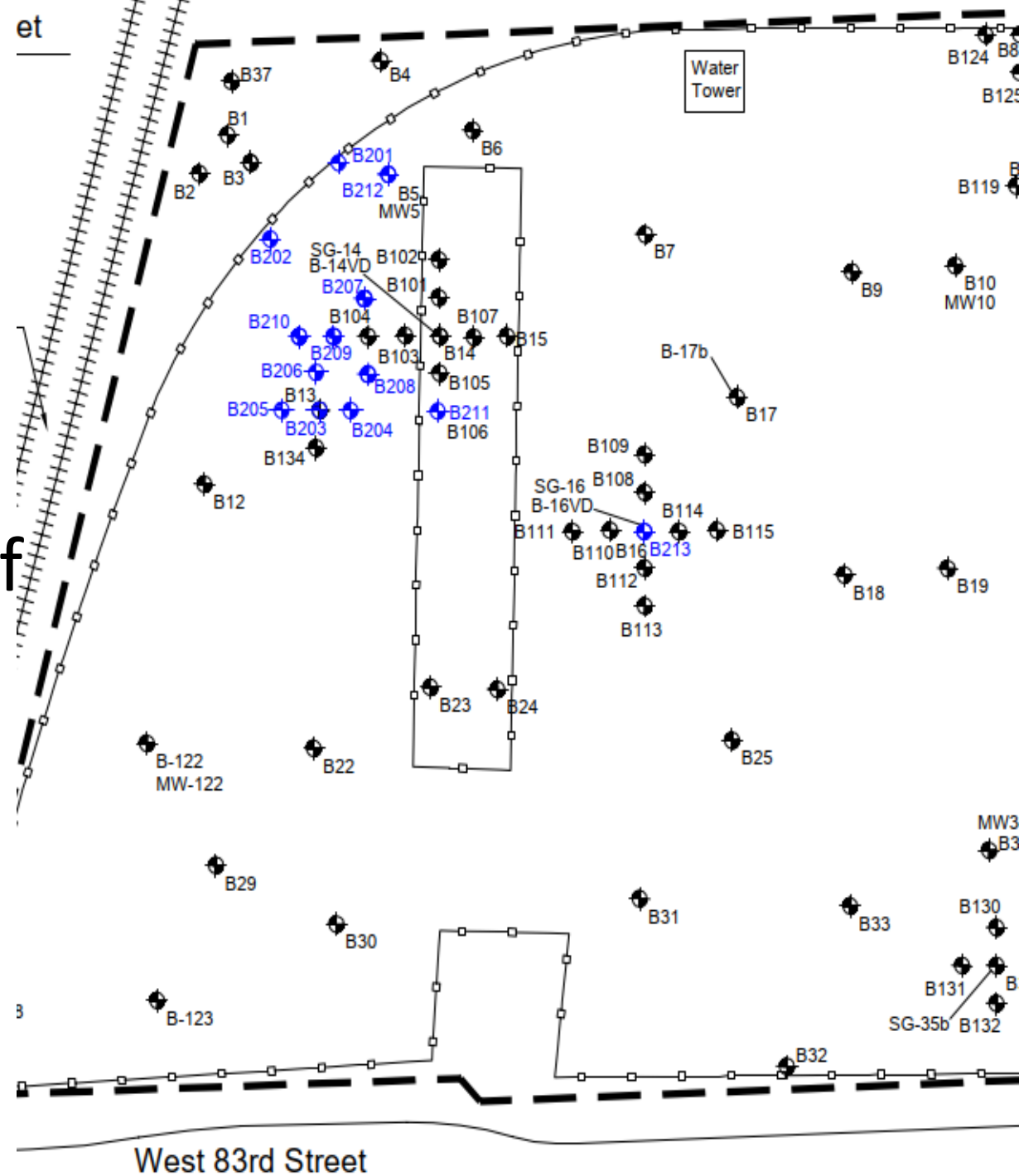
Site Investigation

- Terracon performed environmental site assessments
- Several RECs identified during Phase I ESA
 - Site history revealed potential sources of contamination



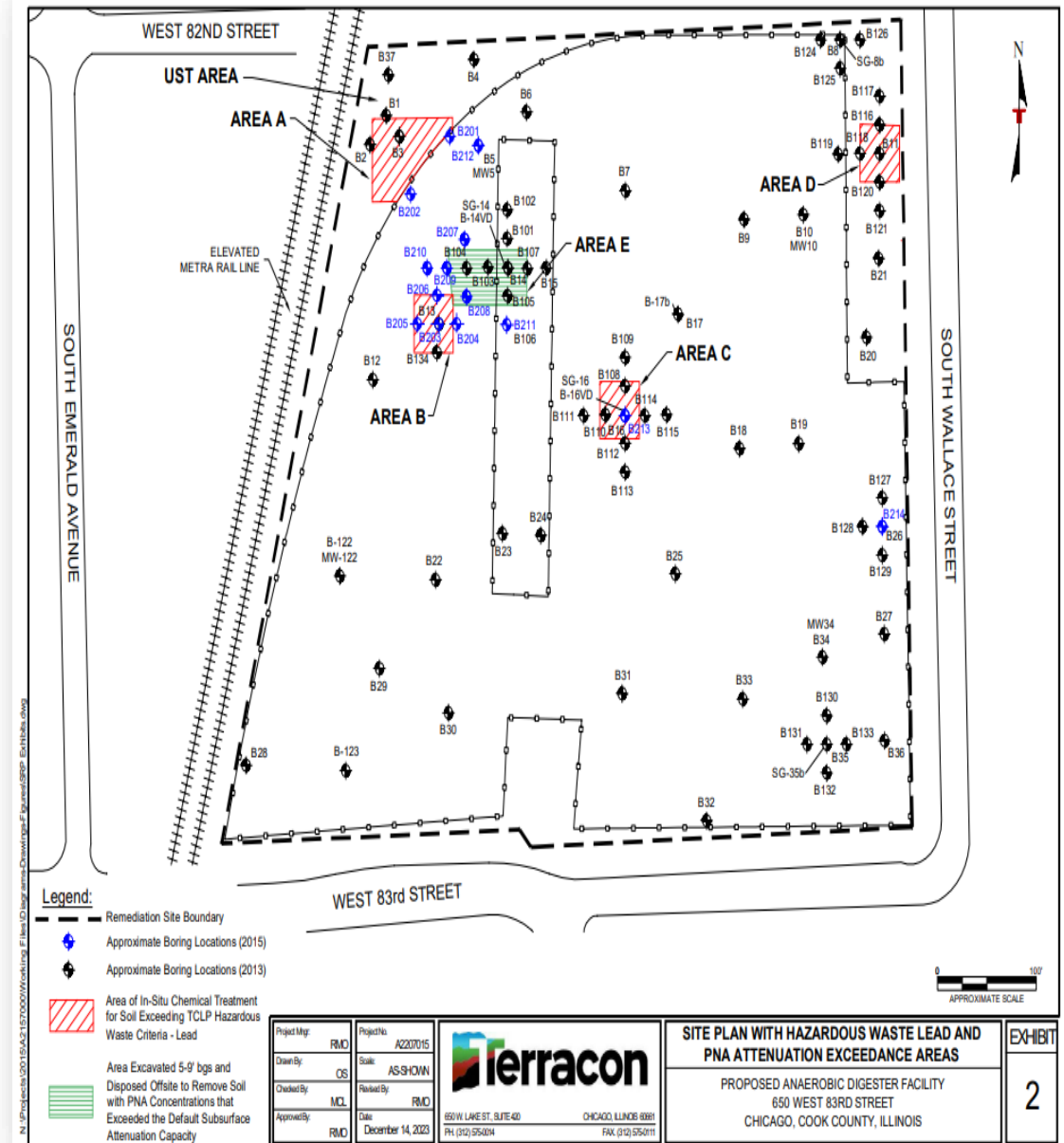
Site Investigation

- To delineate impacts in three dimensions, dozens of borings were advanced
- Soil, groundwater, soil gas sampling and evaluation



Challenges

- Soil samples in five areas required extra remedial action
- Lead exceedances discovered in Areas A, B, C, and D
- Area E exceeded subsurface attenuation capacity of PNAs



PNA Excavation

Soil from 5 – 9 ft. below ground surface was excavated



In-Situ Lead Chemical Treatment

Mixing Free Flow 200 lead stabilization reagent with impacted soil



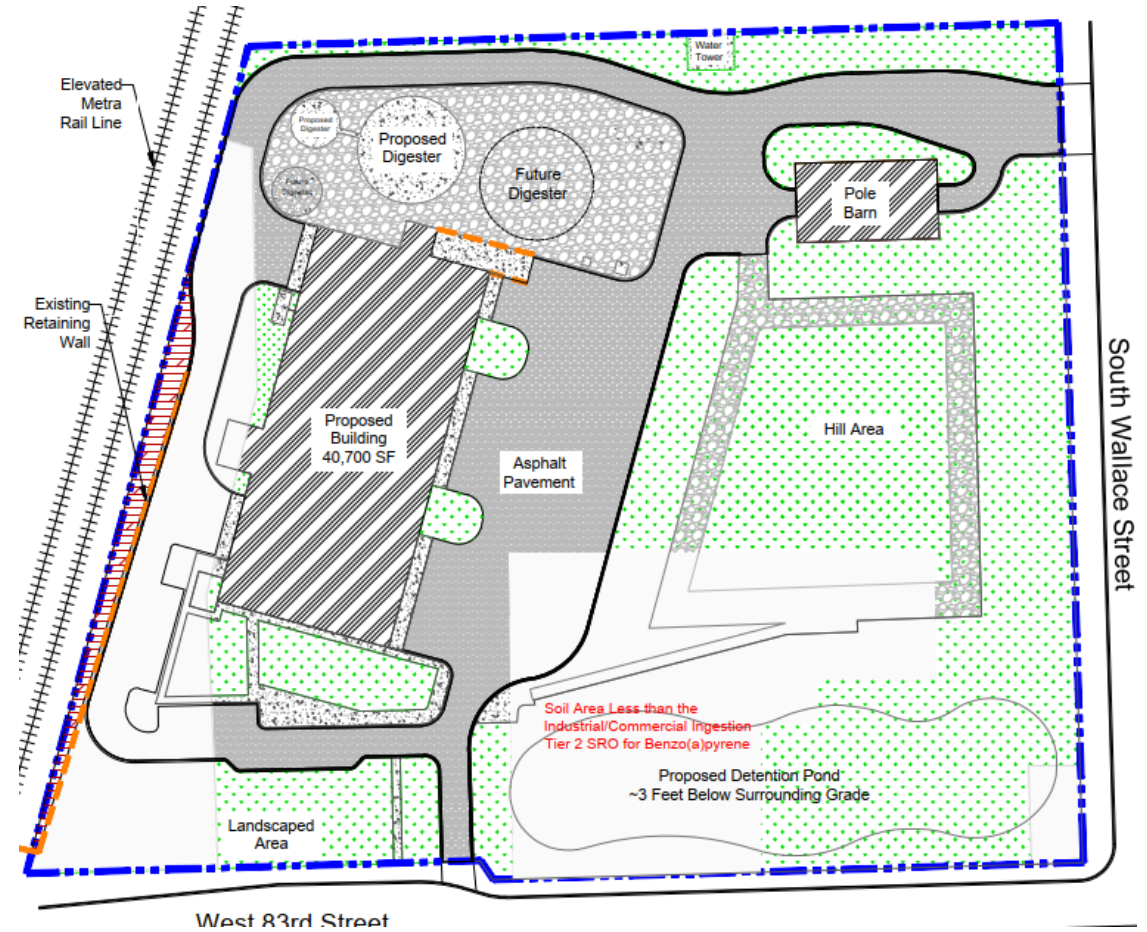
Berm Construction

- Impacted soil reallocation
- Building basement and Detention pond generated a Large amount of impacted soil



Alternative Engineered Barrier

- Soil Management Plan
- Reallocation of impacted soil
- IEPA SRP Comprehensive NFR Letter Required



NFR Letter and Ongoing Requirements

- NFR Letter 2024; project up and running 2025
- Industrial/commercial land usage
- Potable water restriction
- Institutional control



Green Era is Growing!

Exciting opportunities for education, outreach, and community engagement are happening at Green Era:

Acquisition of a 65,000 sq ft building with lab space and an education center

Partnerships with UIC, Argonne National Lab, and CPS



**GREEN
ERA
CAMPUS**



Thank you!