

AASHTO's Role in Supporting Environmental Professionals at State DOTs

Allison Lundy
Program Manager for Resilience and Sustainability
May 16th 2026

Overview

What AASHTO is and how it works with state DOTs

The role of environmental professionals in transportation

How AASHTO supports environmental work

What is AASHTO

AASHTO

AASHTO
RESILIENCE
& SUSTAINABILITY
MANAGEMENT

- Nonprofit association
- Founded in 1914
- Members include:
 - Transportation departments of the 50 states, the District of Columbia, and Puerto Rico
 - 50+ Associate Members from federal, state, and local agencies and other countries
- Covers *all* modes: Aviation, Rail, Highways, Transit, Water, and Active Transportation
- <https://transportation.org/>



How does AASHTO support state DOTs



**Coordination
Between States**



**Research &
Innovation**



**Standards, Technical
Guidance, and Best
Practices**



**Federal Policy
Engagement**

AASHTO Leadership



Russell R. McMurry, P.E.
President

Commissioner,
Georgia Dept of Transportation



Marc D. Williams, P.E.
Vice President

Executive Director,
Texas Dept of Transportation



Justin Powell
Treasurer

Secretary,
South Carolina Dept of Transportation



Jim Tymon
Executive Director



Presidential Emphasis Areas

Reauthorization

Project Delivery

Safety

2021-2026

Vision

Providing improved quality of life through leadership in transportation

Mission

Supporting State DOTs to connect America with the transportation system of today and tomorrow

2021-2026

AASHTO Strategic Plan



2021-2026

- Safety, Mobility, and Access for Everyone
- National Transportation Policy Leadership
- Organizational Excellence with World Class Services



Value of Engagement

- Staying current on technical and policy issues
- Growing relationships and influence
- Participating in peer-to-peer exchange and dialogue
- Progressing state DOT goals forward

AASHTO Staff Leadership



Jim Tymon
Executive Director



Joung Lee
Deputy Director
Chief Policy Officer



Jennifer Krygowski
Deputy Director
Chief of Staff



Donna Tamburelli
Executive Assistant



Clarisse Bernardes Coble
Human Resources Director



Kevin Marshia
Director
Engineering



Monica Russel
Director
Meetings & Member Services



Erin Grady
Director
Publications



Jill Hyland
Director
Workforce Management



Susan Howard
Director
Policy & Govt Relations



Sonny Singh
Director
IT & Strategy Implementation



Robert Lutz
Director
AASHTO re:source



Keith Platte
Director
AASHTOWare



Maggie Kasperski
Director
Communications
and Marketing



Jenet Adem
Director
Finance & Administration

AASHTO's Environmental Program

Sustainability and Resilience in State DOTs



What is a resilient and sustainable transportation network?

Resilience

- Can withstand disruptions such as extreme weather events, natural disasters, or other hazards.
- “The ability to resist, absorb, recover from, or successfully adapt to adversity or a change in conditions.”

Sustainability

- Considers environmental impacts, protects ecosystems, and supports long-term community well-being.
- The "Triple Bottom Line" approach:
 - Robust economic growth
 - Improved quality of life for all citizens
 - Better-than-before health of the environment

How do State DOTs contribute to a resilient and sustainable transportation network?

Environmental Stewardship

- Environmental Review and Compliance
- Ecosystem Restoration
- Wetland Conservation
- Wildlife Crossings
- Community Engagement



How do State DOTs contribute to a resilient and sustainable transportation network?

Sustainability and Resilience

- Climate resilience planning
- EV infrastructure
- Emissions reduction strategies
- Adaptation planning



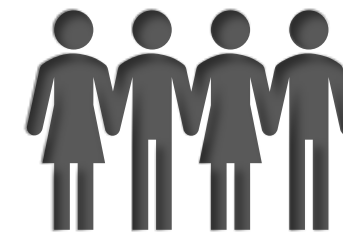
Environmental Professionals at State DOTs



**Compliance
and Review**



**Natural
Resources**



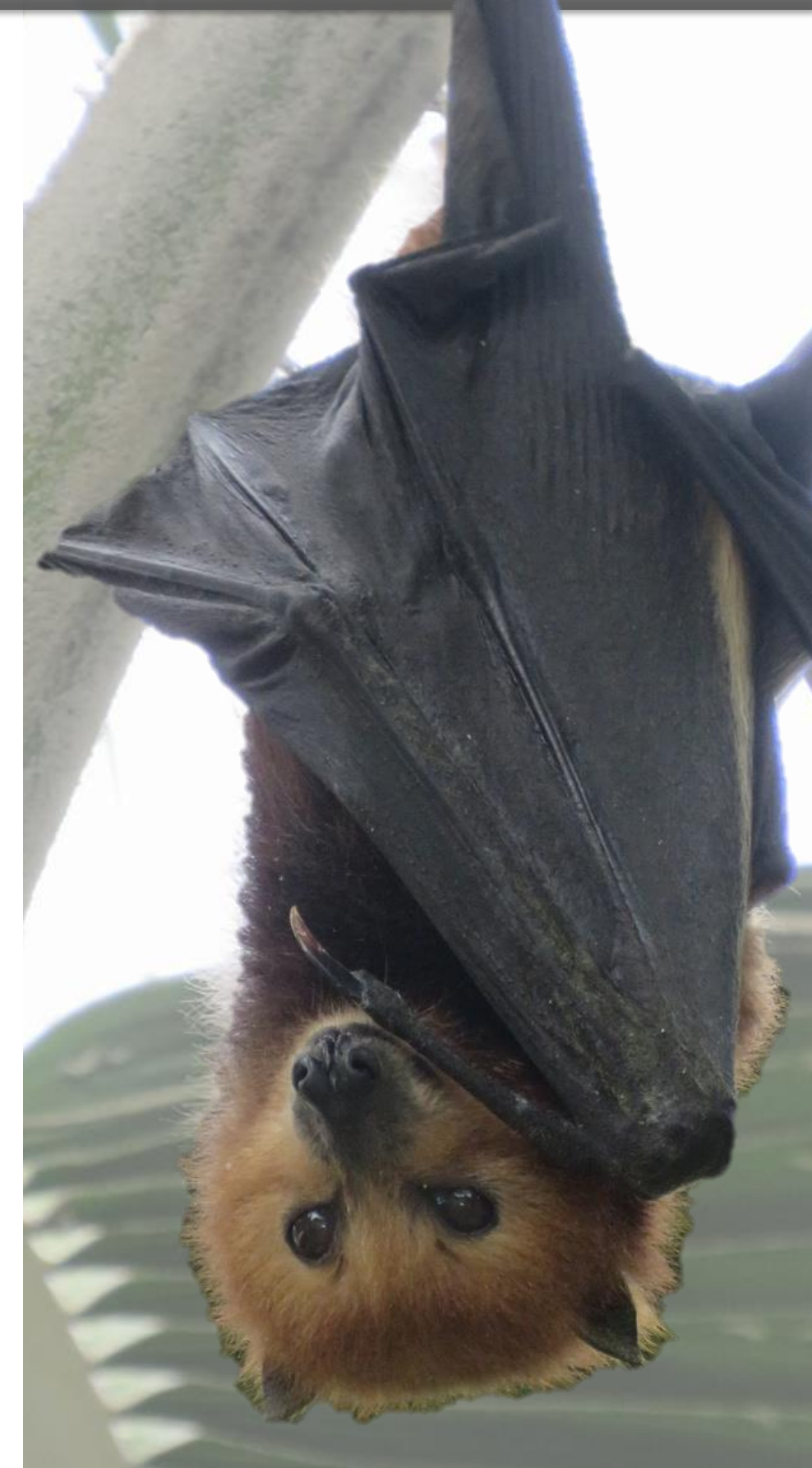
**Cultural Resources
and Community
Engagement**



**Climate
Resilience**

Day-to-Day work of state DOT Environment Professionals

- Document environmental impacts through detailed assessments of air quality, noise, water resources, and habitat effects
- Inspect bridges for nesting birds or bats before maintenance to ensure wildlife protection compliance and minimize ecological disruption
- Design and monitor wildlife crossings to reduce collisions while maintaining habitat connectivity for species movement
- Conduct noise studies near highways to understand traffic impacts and develop mitigation strategies for affected communities



More Environmental Work in Practice

- Work with tribal governments to protect cultural sites near transportation projects, ensuring respectful consultation and preservation of heritage locations
- Maintain native grasses and flowers along highways to support pollinators like bees and butterflies, enhancing biodiversity within transportation rights-of-way
- Collaborate with utilities and communities to determine optimal EV charging station placement based on travel patterns, grid capacity, and equity
- Map flood-prone and erosion-prone areas using GIS technology to inform planning decisions and prioritize infrastructure resilience investments



Sustainability and Resilience in state DOTs

Why are Environmental Professionals Increasingly Critical in Transportation?

- Climate change impacts on infrastructure
- Resilience planning
- Biodiversity and habitat protection
- Community expectations
- Environmental justice considerations





How Does AASHTO Support Environmental Professionals at State DOTs?

AASHTO Committees

Board of Directors
Executive Committee
Strategic Management Committee

Transportation Policy Forum

| | | |
|---------|--------------------|-----------------------|
| Freight | Highways & Streets | Aviation |
| | Rail | Public Transportation |
| | Water | Active Transportation |

AASHTOWare

Research & Innovation

Associate Members

Planning

Bridges & Structures

Bridges & Structures

Materials & Pavements

Environment and Sustainability

Traffic Engineering

Construction

Maintenance

Transportation System Operations

Safety

Transportation System Security and Resilience

Data Management and Analytics

Communications

Performance-Based Management

Funding and Finance

Agency Administration

Human Resources

Knowledge Management

Internal and External Audit

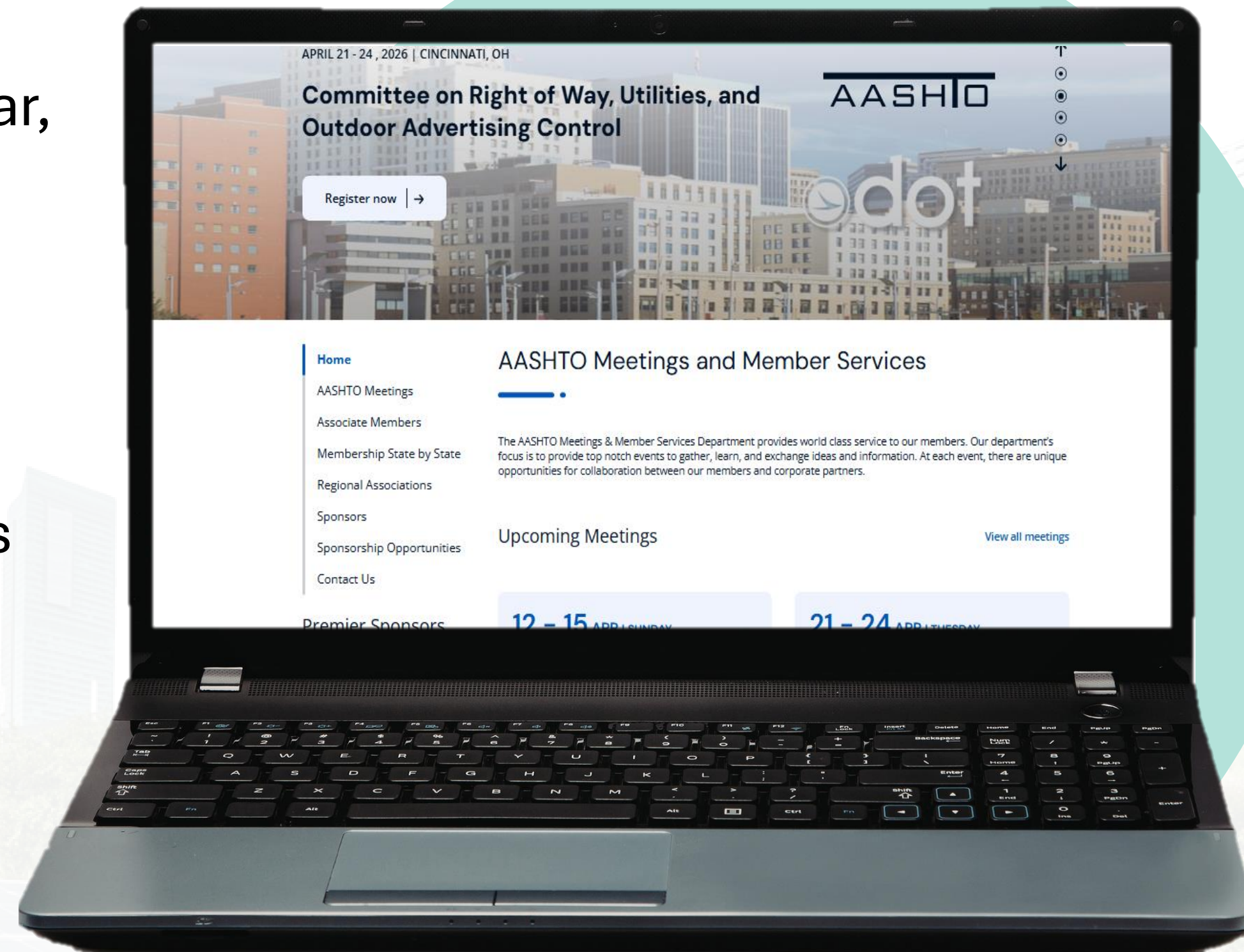
Civil Rights

What AASHTO Committees DO

- Develop and interpret policy
- Develop and maintain technical standards and specifications
- Provides a forum for consideration on transportation issues
- Produce best practices guides and manuals
- Foster collaboration and communication between DOTs and industry
- Disseminate information
- Provide professional development
- Conduct surveys, provide data, and testify on legislative issues

AASHTO Meetings

- AASHTO holds over 30 meetings each year, including:
- Annual Meeting
- Spring Meeting
- Washington Briefing
- Annual Council and Committee Meetings
- <https://transportation.org/meetings>



Save The Date

July 27-30, 2026

AASHTO Committee on Environment and Sustainability Annual Meeting (CES)

The Ritz-Carlton New Orleans
New Orleans, LA



[Transportation.org](https://www.transportation.org)

AASHTO Programs & Technical Support



- Technical Service Programs (TSPs)
- Research and development
- Best practices
- Case studies
- Peer exchanges



NEPA Peer Exchange

- Hosted by AASHTO in partnership with FHWA and TX DOT
- Brought together state DOTs to share experiences and lessons learned from implementing NEPA Assignment programs
- Participants discussed program benefits, legal considerations, and best practices under NEPA
- Sessions highlighted digital tools and strategies to improve environmental review efficiency and project delivery



The Stream by AASHTO Podcast

AASHTO

AASHTO
RESILIENCE
& SUSTAINABILITY
MANAGEMENT

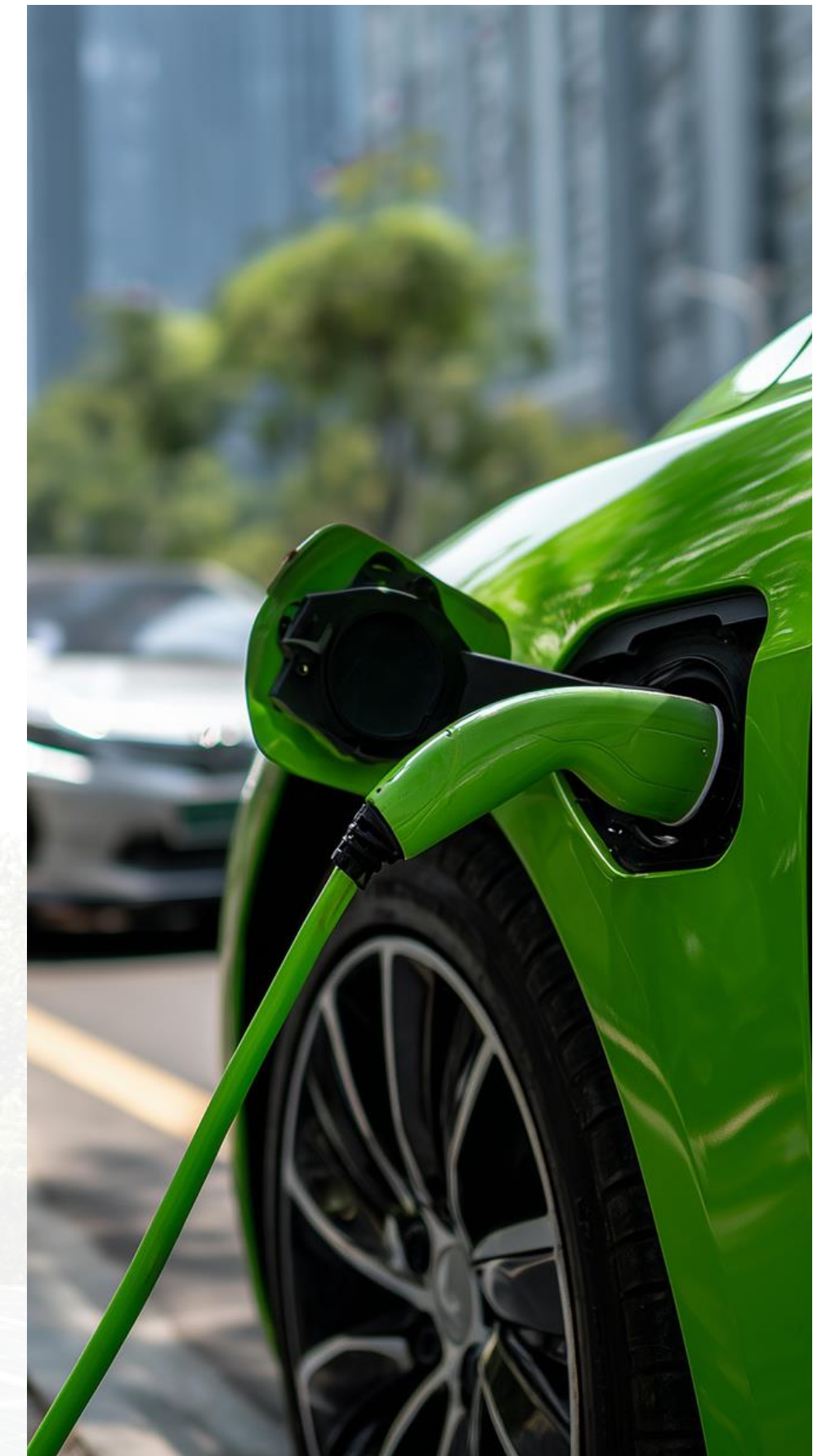
- The Stream by AASHTO podcast explores environmental topics important to people involved in transportation and infrastructure programs.
- Recent Topics:
 - How Texans are Protecting Monarch Butterfly Migration Paths
 - Electrified Roadway Testing in Indiana
 - Mountain Lion Conservation in California
 - Stormwater Engineering and Erosion Control



Report on the Role of State Agencies In Transportation Electrification

- Through our Environmental Management TSP, AASHTO is supporting a state of practice report led by Atlas Public Policy on EV charging deployment and the role of public transportation agencies
- Report will examine how state DOTs, municipal transportation agencies, and metropolitan planning organizations are planning and implementing publicly accessible EV charging infrastructure
- Analysis will assess major federal programs to identify best practices and challenges for state agencies

Expected June 2026



Policy and Government Relations

- Coordination with U.S. DOT
- Federal policy and Surface Transportation Bill Reauthorization
- Representing State DOT Perspectives



- AASHTO Journal: <https://aashtojournal.transportation.org/>
- Daily Transportation Update: <https://dailyupdate.transportation.org/>
- AASHTO Store: <https://transportation.org/store/>
- Social Media

 X (formerly Twitter): [@aashtospeaks](https://twitter.com/aashtospeaks)

 Facebook: <https://www.facebook.com/AASHTOspeaks/>

 LinkedIn: <https://www.linkedin.com/company/aashto/>

 Instagram: [@aashtospeaks](https://www.instagram.com/aashtospeaks)



Opportunities for Engagement



- AASHTO Job Board
- Publications and Technical Training
- Meetings
- Contact Us

Thank You

Allison Lundy
Program Manager for Resilience and Sustainability
Alundy@AASHTO.org

AASHTO
 **RESILIENCE
& SUSTAINABILITY**
MANAGEMENT

Transportation.org