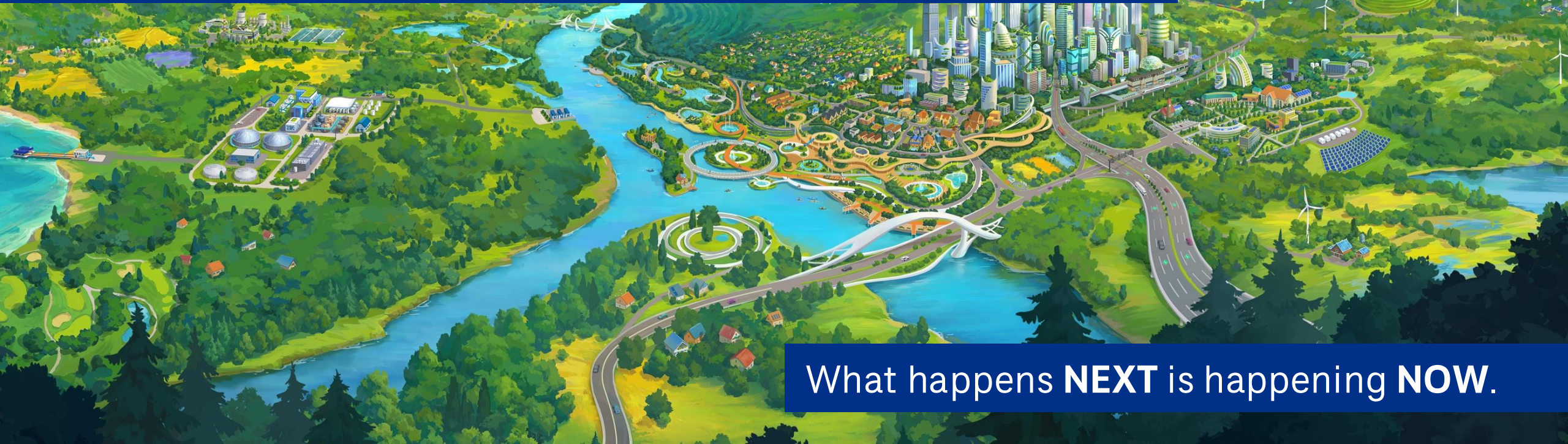


The Art of Figuring it Out: From To-do to Ta-da



What happens **NEXT** is happening **NOW**.

Ariel Weyandt, AICP

Annamarie Weddle, AICP

CDM
Smith

Introductions



**Annamarie
Weddle, AICP**

PORTLAND, OR

Transportation &
Environmental
Planner



**Ariel
Weyandt, AICP**

COLUMBIA, SC

Transportation &
Environmental
Planner

Agenda & Purpose

1. Regulatory Ping-Pong
2. Maintaining Focus Amid Disruption
3. Embracing the Generalist Superpower
4. The Art of Good Instructions
5. Learning Together – Colleagues and Mentors
6. From To-do to Ta-Da



Regulatory Ping Pong

Regulatory Ping-Pong

Greenhouse Gas Analyses

2009 - 2016

Expansion of
Climate Analysis



2017 - 2020

Retraction of Climate
Analysis & Litigation



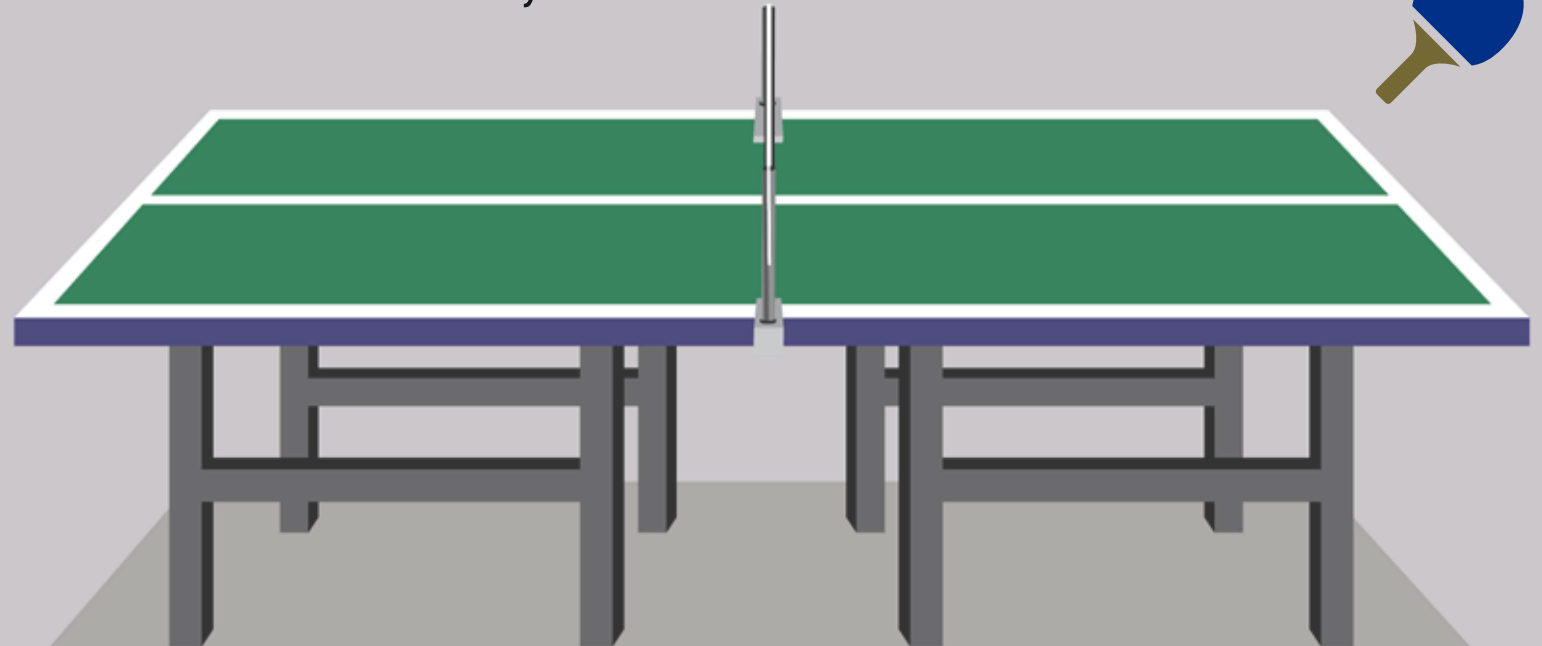
2021 - 2023

Re-expansion of
Climate Analysis



2025 - 2026

Rollback of Climate Analysis
& Directives Revoked



Regulatory Ping-Pong

Tips and tricks



Stay within your scope and lean on specialists



Participate in informal discussions



Rely on reputable resources



Use AI to help follow legislation and summarize*

**Be sure to check your organization's and/or client policies and fact check findings*



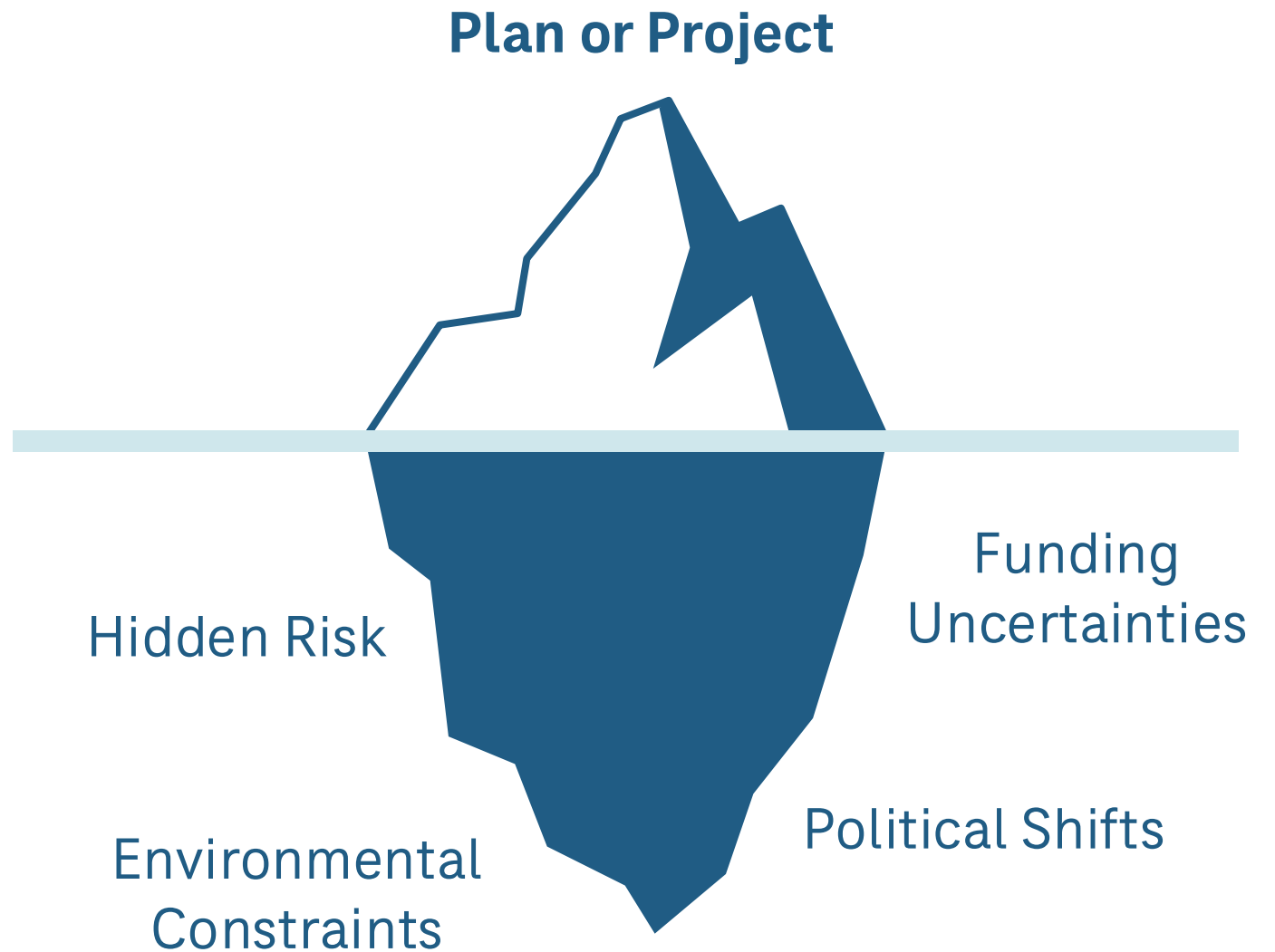
What methods do you use to stay updated?



Maintaining Focus Amid Disruption

Maintaining Focus Amid Disruption

DETOUR



What else belongs on the bottom of the iceberg?

Maintaining Focus Amid Disruption

Tips and tricks



PAUSE



OBSERVE



**GET
CURIOUS**

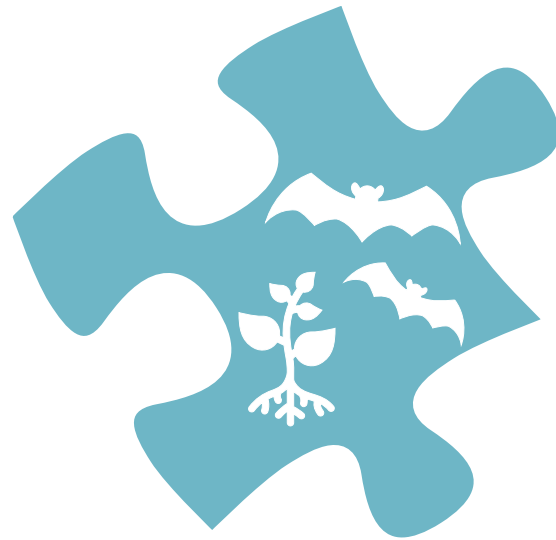


Keep it in perspective



Embracing the Generalist Superpower

Embracing the Generalist Superpower



Natural Resources



Access & Mobility



Transportation



 Who has fallen victim to work occurring in silos?

Embracing the Generalist Superpower

Tips and tricks



See the whole board



Translate across multiple domains



Improve problem solving and decision making



Improves resilience to shifts in the workplace



The Art of Good Instructions

The Art of Good Instructions

Instructions are part of everyday working life.

- Smile with your bottom teeth
- Nod your head yes using only your chin
- Pretend to yawn without opening your mouth

The Art of Good Instructions

**They need to
complete and submit
the assigned task by the
date in the schedule.**

The Art of Good Instructions

They need to

WHO?

complete and submit

the assigned task by the

WHAT?

date in the schedule.

WHEN?

The Art of Good Instructions

- Construction activities that disturb habitat will be avoided during winter torpor and summer occupancy.
- Construction activities that disturb **suitable foraging and roosting** habitat, **primarily tree clearing activities**, will be avoided during winter torpor (**December 15th - February 15th**) and summer occupancy (**April 1st - June 15th**).

The Art of Good Instructions

Tips and tricks



Be clear



Consider your audience



Make expectations of the outcome/output clear



If receiving instruction, follow up when things are unclear



Learning Together – Colleagues & Mentors

Learning Together

40-45 YEARS ACROSS CAREER

Early Career



Relationships may be limited

Mid Career



Network expands; lots of types of relationships

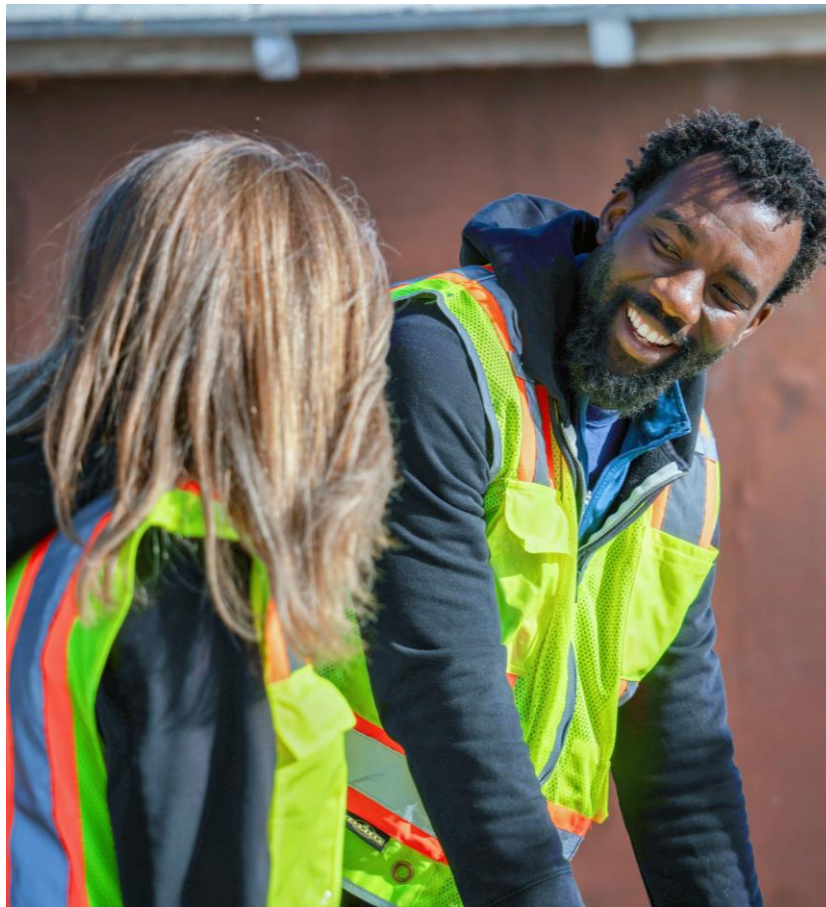
Late Career



Role may focus on teaching others

Learning Together

Tips and tricks



Learning Together

Tips and tricks



Connect Often



Learn to love redlines and getting respectfully roasted



Take initiative



From To-Do to Ta-Da!

From To-Do to Ta-Da!



*Your career is
a marathon,
not a sprint*

From To-do to Ta-Da!

Tips and tricks



Track your personal progress



Become your own best advocate



Build a culture of recognizing others

Thank you for your participation!



**Annamarie
Weddle**

weddleae@
cdmsmith.com



Connect with
me on LinkedIn

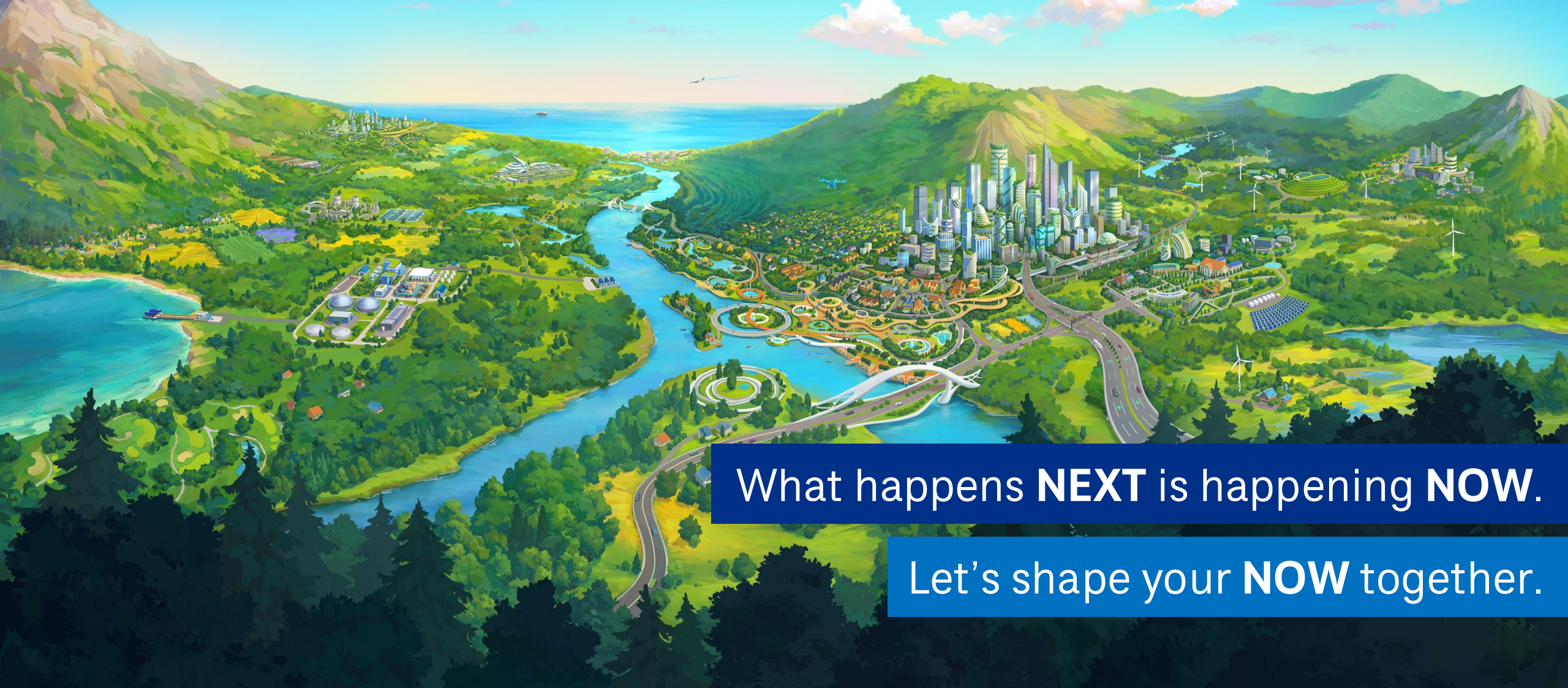


**Ariel
Weyandt**

weyandtal@
cdmsmith.com



Connect with
me on LinkedIn



What happens **NEXT** is happening **NOW**.

Let's shape your **NOW** together.

CDM
Smith